

0-5AAC OUTPUT



AL



Small solid-core

BL



Medium solid-core

CL



Large solid-core

H681x-5A



Split-core

Current Transformers, 5A Output

Veris' split-core and solid-core current transformers provide a 0-5AAC output for use with transducers, data loggers, and chart recorders.

APPLICATIONS

- Using with transducers
- Data logging
- Recording

SPECIFICATIONS (Solid-Core)

Frequency Range	50-400Hz
Leads	UL 1015, 105°C, UL/CSA approved, 16 AWG, 24" long
Rating Factor	1.0@30°C (86°F)
Insulation Level	600AC**, 10KV BIL fullwave

SPECIFICATIONS (Split-Core)

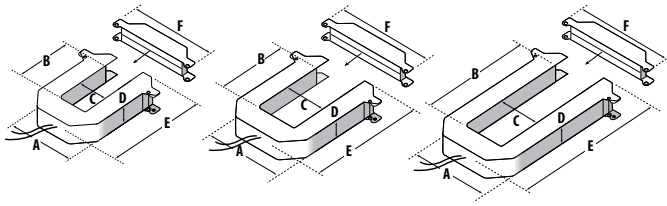
Output at Rated Current	5 Amps AC
Frequency Range	50/60Hz
Leads	18 AWG, UL 1015 twisted pair, 6 ft. (1.8m) length
Temperature Range	-15° to 60°C (5° to 140°F)*
Humidity Range	0-95% non-condensing
Insulation Class	600VAC**

* H6812-2000-5A 80 to 100% loaded, -15° to 50°C (5° to 122°F), H6810-100A-5A, accuracy & burden specified at 40°C (104°F)

**Do not apply 600V Class current transformers to circuits having a phase-to-phase voltage greater than 600V, unless adequate additional insulation is applied between the primary conductor and the current transformers. Veris assumes no responsibility for damage of equipment or personal injury caused by products operated on circuits above their published ratings.

DIMENSIONAL DRAWINGS

H681x5A Split-core



**H6810
SMALL
100 Amp
200 Amp
300 Amp**

A= 3.8" (96 mm)
B= 1.2" (30 mm)
C= 1.3" (32 mm)
D= 1.2" (30 mm)
E= 4.0" (100 mm)
F= 4.8" (121 mm)

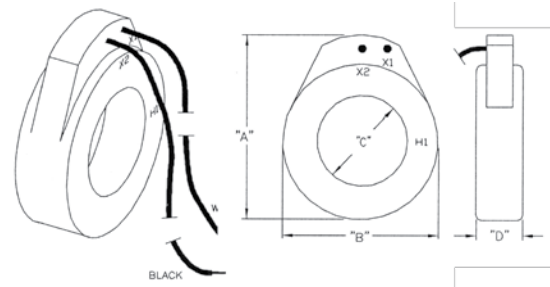
**H6811
MEDIUM
400 Amp
600 Amp
800 Amp**

A= 4.9" (125 mm)
B= 2.9" (73 mm)
C= 2.5" (62 mm)
D= 1.2" (30 mm)
E= 5.2" (132 mm)
F= 5.9" (151 mm)

**H6812
LARGE
800 Amp
1600 Amp
2000 Amp
2400 Amp**

A= 4.9" (125 mm)
B= 5.5" (139 mm)
C= 2.5" (62 mm)
D= 1.2" (30 mm)
E= 7.9" (201 mm)
F= 5.9" (151 mm)

AL/BL/CL Solid-core



**AL
SMALL**

A= 2.7" (70 mm)
B= 2.5" (63 mm)
C= 1.1" (26 mm)
D= 1.1" (26 mm)

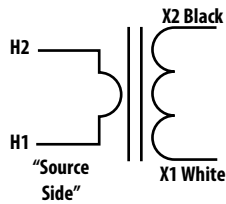
**BL
MEDIUM**

A= 3.7" (90 mm)
B= 3.4" (88 mm)
C= 2" (52 mm)
D= 1.1" (26 mm)

**CL
LARGE**

A= 4.9" (124 mm)
B= 4.5" (115 mm)
C= 3" (76 mm)
D= 1.1" (26 mm)

APPLICATION/WIRING EXAMPLE



ORDERING INFORMATION

MODEL	RATIO	F. S. ACCURACY	BURDEN CAPACITY IN VA
AL500	50:5	1%	2.0
AL101	100:5		2.0
AL151	150:5		4.0
AL201	200:5		4.0
AL251	250:5		6.0
AL301	300:5		8.0
AL401	400:5		10.0
BL501	500:5		12.5
BL601	600:5		15.0
BL801	800:5		8.0
BL102	1000:5		10.0
BL122	1200:5		12.5
CL122	1200:5		10.0
CL152	1500:5		12.5
CL162	1600:5		12.5
CL202	2000:5		15.0

MODEL	RATIO	F. S. ACCURACY	BURDEN CAPACITY IN VA
H6810-200A-5A	200:5	1%	2.5
H6810-300A-5A	300:5		2.5
H6811-400A-5A	400:5		5.0
H6811-600A-5A	600:5		5.0
H6811-800A-5A	800:5		12.5
H6812-800A-5A	800:5		5.0
H6812-1200A-5A	1200:5		22.5
H6812-1600A-5A	1600:5		22.5



ACCESSORIES

Universal Mounting Bracket Kit for H681x CTs...see page 220.